

TYPE PDB

Features

- Manufactured from high strength 6061-T6 aluminum alloy
- Valox® insulating base
- UL 1059 Recognized 90° C 600 volts
- Electro-tin plated
- Clear cover

Benefits

- Reliable use for copper conductor only
- Provides a high degree of impact resistance with superior insulating qualities
- Ensures reliability
- Provides low contact resistance
- Provides visual inspection



Catalog Number	Connector		Primary		Secondary		Ampere Rating Per Pole	Number Of Poles	Block Size	Hex Size	
	Primary	Secondary	Wire Range	Openings Per Pole	Wire Range	Openings Per Pole				Primary	Secondary

All wire sizes, unless noted otherwise, are American Wire Gauge (AWG)

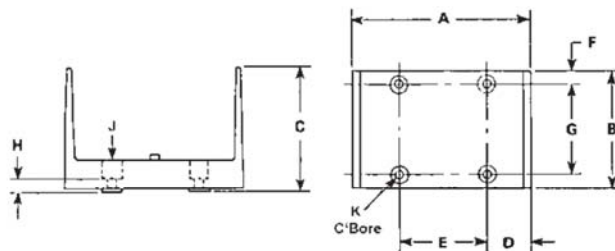
Valox® is a registered trade name of the General Electric Company.

A versatile tap hole, wire range 8-14 AWG included on the connector.

Tested to UL 1059, UL File E84782

† Not CSA Certified

F



Block Size	No. of Poles	Dimensions									
		A	B	C	D	E	F	G	H	J	K
W	1	6-7/32	4	4-3/8	1-19/32	3	3/8	3-1/4	7/16	9/32	9/16